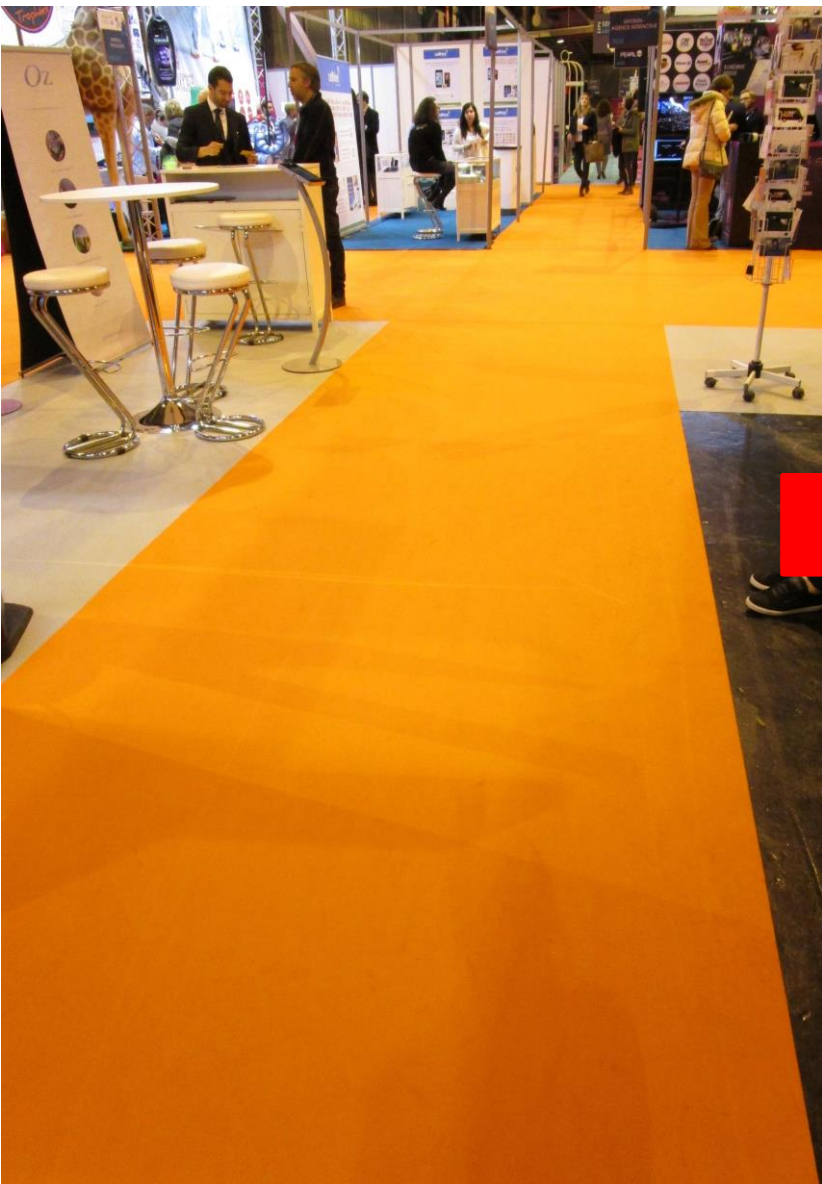




UNDERSTANDING **EUROCLASSES** FIRE CLASSIFICATIONS
and **PERFORMANCE DECLARATIONS**



PREAMBLE

The purpose of carpets' fire classification is not to check the resistance to burning of cigarettes, but to calculate, in case of fire, the flammability and the speed of propagation of the flame in a material laid on the ground.



REQUIREMENTS

REQUIREMENTS

At the European level, the decree of 21 November 2002 on the reaction to fire of construction and planning products now introduces the "**euroclasses**" of reaction to fire.

These are more complete than the old French classification, taking into account the fumes released as well as any projected droplets.

This regulation on the reaction to fire of construction products requires performance evaluation according to the new Euroclasses system, once the CE marking of the product has entered into force.

Carpets and textile floor coverings are classified as 'construction products' by Council Directive 89/106 of 21 December 1988. Since 2013, the Construction Products Regulation (CPR - no. 305 / 2011) replaces the Construction Products Directive (DPC - 89/106 / EEC).

The CPR promotes the placing on the market and free movement of construction products, and meets the basic regulatory requirements of construction works by CE marking. This regulation is applicable by all member states of the Union. It imposes multiple obligations on the part of manufacturers, distributors and importers. For example, providing useful information on the essential characteristics of the product (**Declaration of Performance**) becomes essential to comply with this new legislation. The CE marking on the product or packaging also becomes proof that the product complies with the Community requirements by manufacturer's commitment.

European harmonization
of building products reaction to fire tests

A solid red square graphic element positioned to the left of the section header.

EUROCLASSES

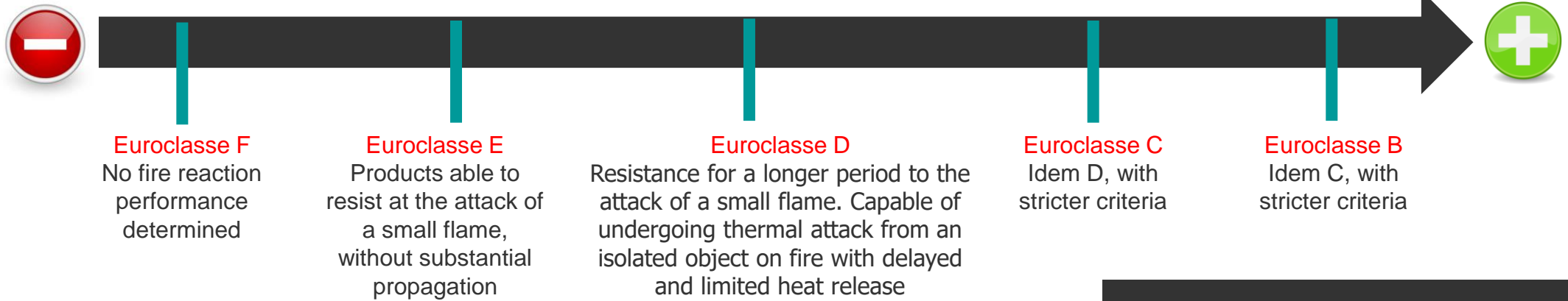
7 categories of classification relate to the fire reaction of floors from A1fl (fl for floor) to Ffl. Only the first 6 categories correspond to an M classification.

EUROCLASSES

5 concern the carpet

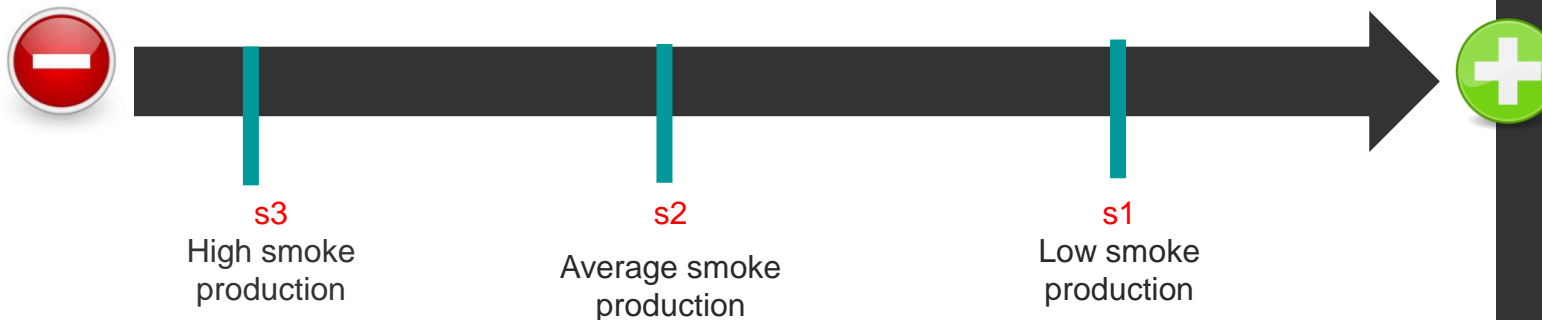
Energy contribution / Gradual thermal demand

■ B, C, D, E, F



Additional rankings for smoke production

■ s1, s2, s3



EUROCLASSES

Equivalent

Classification in accordance with NF EN 13501-1
Table IV-1 taken from the decree of 21 November 2002 on the reaction
to fire of construction and landscaping products

Requirement		
Bfl	s1	M3
Bfl	S2	M3
Cfl	s1	M3
Cfl	s2	M3
Dfl	s1	M4
Dfl	s2	M4

German standard: Classes Cfl and Bfl-s1 meet class B1 of German
standard DIN 4102

EUROCLASSES

Test methods

To assign the Euroclasses, 2 tests are carried out:

- the small flame test (NF EN ISO 11925-2) :

The objective is to evaluate the ignitability of a product exposed to a thermal solicitation weak and localized, simulated by a small flame.

- European radiant panel test (NF EN ISO 9239-1) :

The objective is to determine the critical radiant flux from which a flame front stops to propagate on a horizontal surface consisting of a flooring sample.

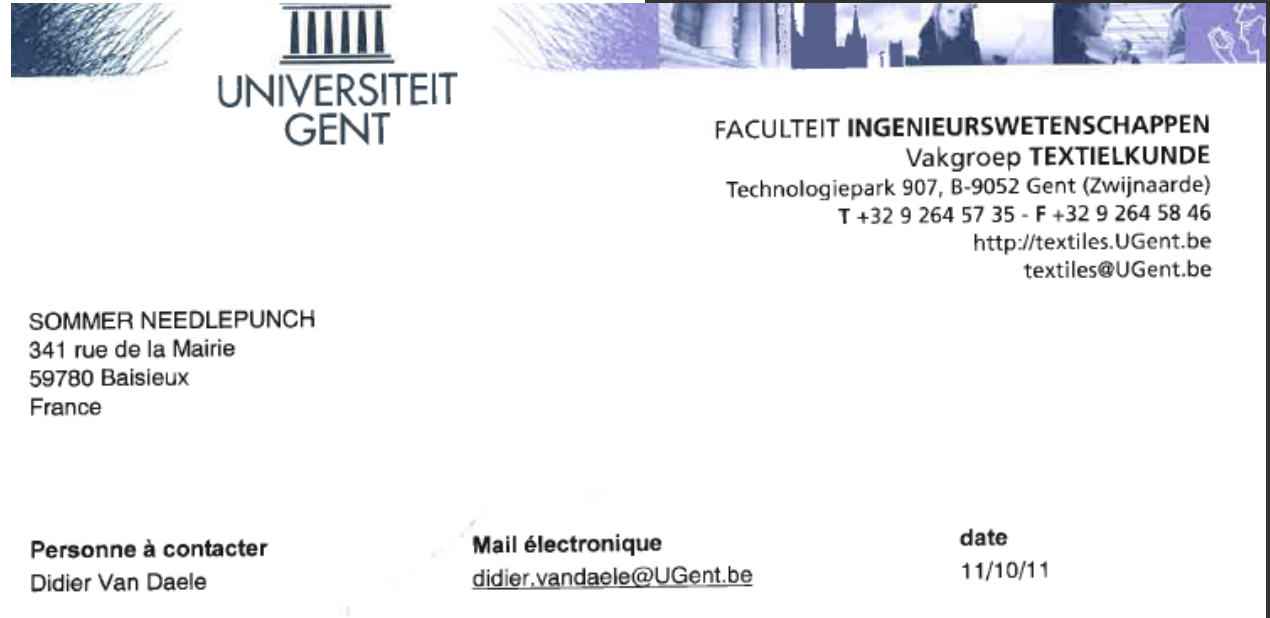


EUROCLASSES

Colors tested

The test is carried out on **one color** of the range but is, of course, **valid for all the colors of the range**.

European Standard NF EN 14041: "the color and type of design of a floor covering have no influence on the fire behavior, unless their modification causes a change in the composition or other parameters, as mentioned above".



UNIVERSITEIT
GENT

FACULTEIT INGENIEURSWETENSCHAPPEN
Vakgroep TEXTIELKUNDE
Technologiepark 907, B-9052 Gent (Zwijnaarde)
T +32 9 264 57 35 - F +32 9 264 58 46
<http://textiles.UGent.be>
textiles@UGent.be

SOMMER NEEDLEPUNCH
341 rue de la Mairie
59780 Baisieux
France

Personne à contacter Didier Van Daele	Mail électronique didier.vandaele@UGent.be	date 11/10/11
--	---	------------------

RAPPORT D'ESSAI 10-907

Rapport de classement - Adaptation

Echantillons reçus :

Tapis aiguilleté plat avec couche d'usure 100% polypropylène avec imprégnation à base de latex SBR.
Référence commerciale: **Expostyle** Coloris: **bléu**
Date de production 22/10/2010, n° 1015795, n° bobine mère: 100193900
Reçu le 29/10/2010

But de l'essai : détermination du comportement au feu

EUROCLASSES

Validity limit

No validity limit on fire classification reports for a floor covering subject to CE marking under the life of the product, and as long as the product composition remains unchanged.



ABOUT THE DOP...

DOP : declaration of performance

As of 1 July 2013, under the Construction Products Regulation (CPM - No. 305/2011), the manufacturer has the obligation to draw up a declaration of performance, leading to CE marking any product covered by a harmonized European standard,

Textile floor coverings show a harmonized standard: EN 14041.

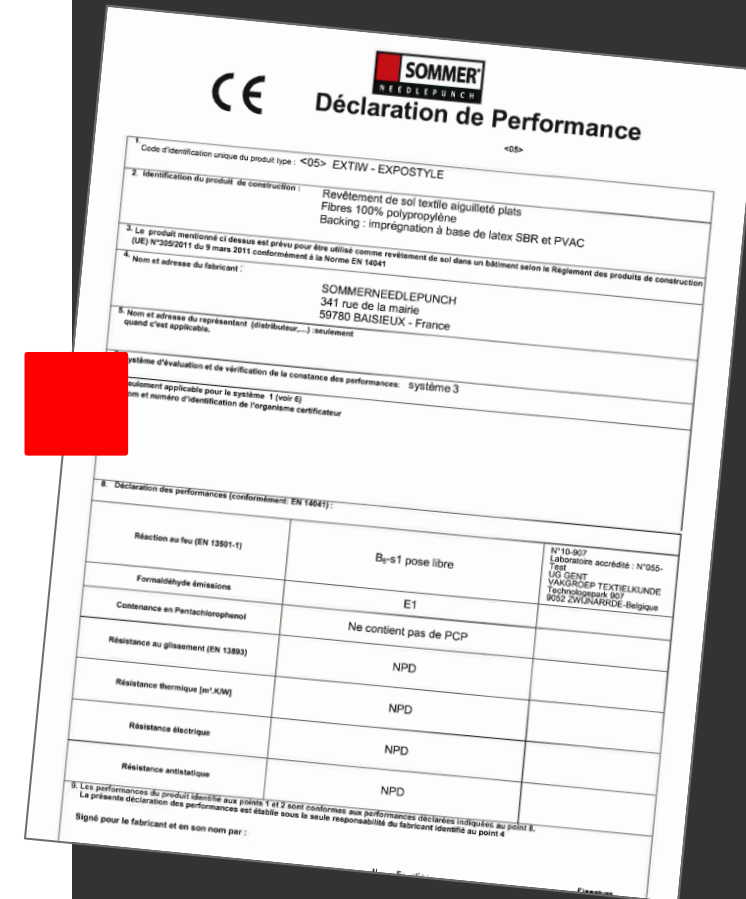
The essential characteristics for Sommer products are:

- Fire classification
- Emission of formaldehyde
- PCP (PentaChloroPhénol) content

The DOP, which has been mandatory since 2013, is being put on the market without any limit of validity.

This is a statement made by the manufacturer.

To prove a fire performance, you need the ranking and the DOP (since 2013).



CE **SOMMER NEEDLEPUNCH** **Déclaration de Performance**

1. Code d'identification unique du produit type : <05> EXTIW - EXPOSTYLE

2. Identification du produit de construction : Revêtement de sol textile aiguilleté plats
Fibres 100% polypropylène
Backing : imprégnation à base de latex SBR et PVAC

3. Le produit mentionné ci-dessus est prévu pour être utilisé comme revêtement de sol dans un bâtiment selon le Règlement des produits de construction (UE) N°305/2011 du 9 mars 2011 conformément à la Norme EN 14041

4. Nom et adresse du fabricant : SOMMERNEEDLEPUNCH
341 rue de la mairie
59780 BAISIEUX - France

5. Nom et adresse du représentant (distributeur...) éventuellement applicable : [redacted]

Système d'évaluation et de vérification de la constance des performances : système 3
Système applicable pour le système 1 (voir 6)
Nom et numéro d'identification de l'organisme certificateur

6. Déclaration des performances (conformément EN 14041):

Réaction au feu (EN 13501-1)	B _s -s1 pose libre	N°10-007 Laboratoire accrédité - N°055-100-100 VAKGROEP TEXTIELKUNDE Technische Hogeschool Brussel 1052 ZWANBERGHE-Belgique
Formaldéhyde émissions	E1	
Contenance en Pentachlorophenol	Ne contient pas de PCP	
Résistance au glissement (EN 13893)	NPD	
Résistance thermique (m ² .K/W)	NPD	
Résistance électrique	NPD	
Résistance antistatique	NPD	

7. Les performances du produit identifié aux points 1 et 2 sont conformes aux performances déclarées indiquées au point 6. La présente déclaration des performances est établie sous la seule responsabilité du fabricant identifié au point 4.
Signé pour le fabricant et en son nom par :